



Sitemap generator for RoboHelp

Installation and use

Willam van Weelden

Copyright 2014, WvanWeelden Consultancy. All rights reserved.

No part of this document may be reproduced, transmitted in any form or by any means without the prior written permission of WvanWeelden Consultancy.

www.wvanweelden.eu

Table of Contents

Sitemap generator	4
Installing the script.....	5
Creating a sitemap.....	6
Create the sitemap.....	6
Automatically create sitemaps on generation	9
Set the URL for every Single Source Layout	9
Set the script to run automatically.....	11
Stop the script from running automatically.....	12
Create sitemaps for merged help	13
Submitting your sitemap to a search engine	16
Bing.....	16
Google.....	18

Sitemap generator

Thank you for purchasing the sitemap generator for RoboHelp. With this script you can create sitemaps for your help content, thus allowing search engines such as Google to index your entire help.

The Sitemap generator supports the following outputs:

- FlashHelp
- FlashHelp Pro
- Multiscreen HTML5
- Responsive HTML5
- WebHelp
- WebHelp Pro

The following files are added to the sitemap and will be indexed:

- .htm/.html: RoboHelp topics and imported files.
- .doc/.docx/.rtf: Word files.
- .pdf: PDF files
- .xls/.xlsx: Excel files

If you have any questions regarding this script, or if you need help with RoboHelp, don't hesitate to contact me.

Willam van Weelden

www.wvanweelden.eu

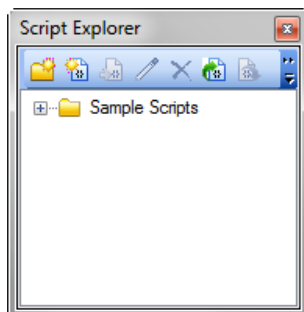


This script saves your settings in an XML file in the project directory (scriptSettingFile.xml). This file is not added to the RoboHelp project and is also not added to version control. Be sure to retain this file, otherwise your settings will be lost.

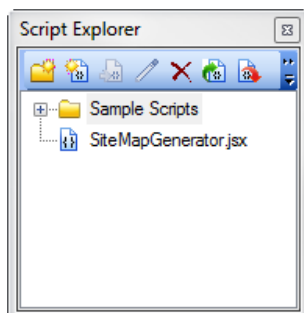
Installing the script

To use the script, you must first import the script into RoboHelp:

1. Open any RoboHelp project.
2. Open the Script Explorer. You open the Script Explorer by clicking *View > Pods > Script Explorer*.
3. In the Script Explorer, click on the blank space below the scripts so that no script or directory is selected.



4. Click the **Import Script files** ().
5. In the file picker, select the *SiteMapGenerator.jsx* file and click **Open**.



The script is now imported into RoboHelp. See “Creating a sitemap” on page 6 and “Automatically create sitemaps on generation” on page 9 for more information on how to use the script.

Creating a sitemap

Before you create a sitemap, you need to know the URL where the help will be published. This is important, because a sitemap requires the full URL of all the files in your output. Therefore, you need to set the URL for every Single Source Layout where you want to include a sitemap.

The URL you need, is the full URL of the help once it is published. For example: The start file of your help is:

```
http://www.example.com/help/index.htm
```

The URL that you need to set in the Sitemap generator is:

```
http://www.example.com/help/
```

Be sure to include the full directory and the ending slash.

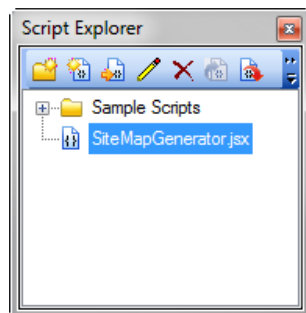


The URL must be set correctly for every Single Source Layout. If the URL is set incorrectly, search engines will not be able to read the sitemap.

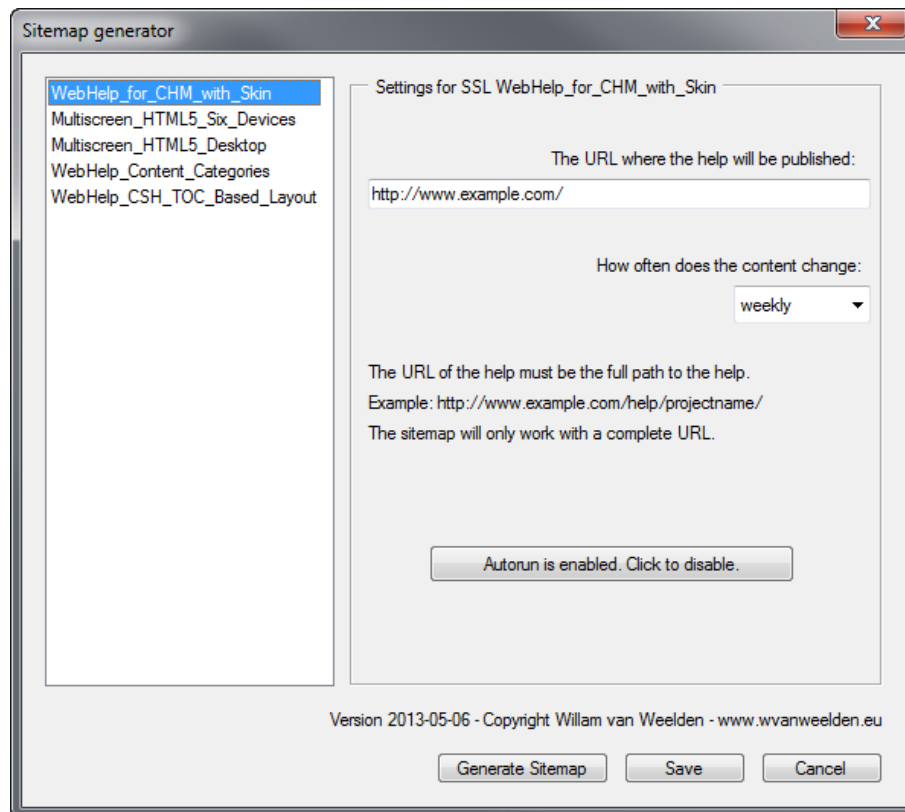
Create the sitemap

You create a sitemap as follows:

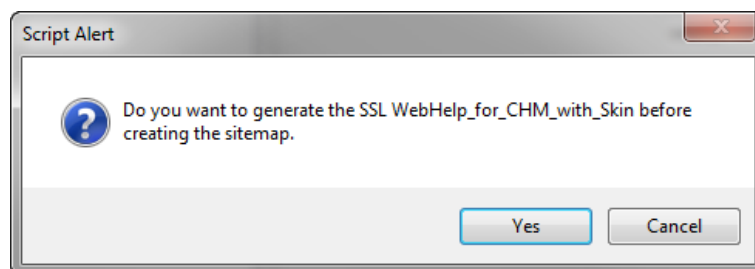
1. Open the RoboHelp project where you want to create a sitemap for.
2. Open the Script Explorer. You open the Script Explorer by clicking *View > Pods > Script Explorer*.



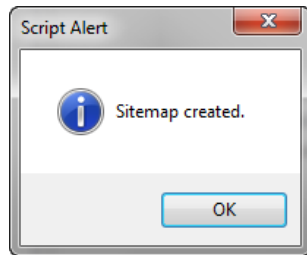
3. Select the Sitemap generator script and click **Run Selected Script File** (🔧).



4. In the left pane, select the Single Source Layout for which you want to generate a sitemap.
5. Add the URL of the help in field *URL*.
6. Choose how often this content changes.
7. Click **Generate Sitemap**. (Your settings are automatically saved.)

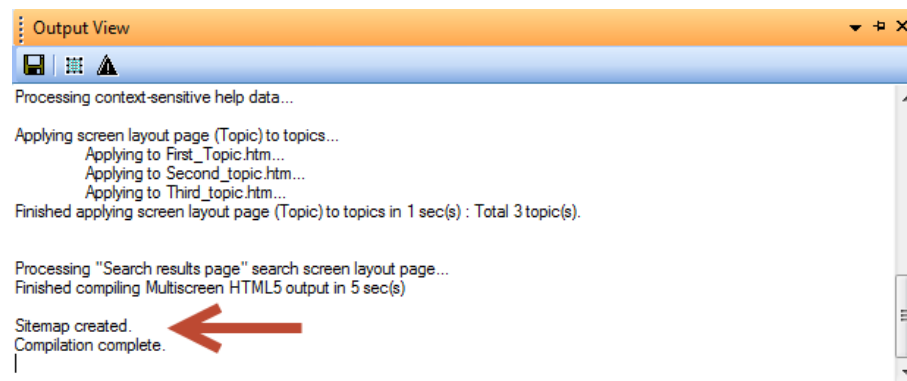


8. If you want to generate the output before creating a sitemap, click **Yes**. Otherwise click **Cancel** or **No**. (Name may vary per installation.)
9. The sitemap is created when the script shows the following alert. Click **OK** to return to the sitemap generator.



Automatically create sitemaps on generation

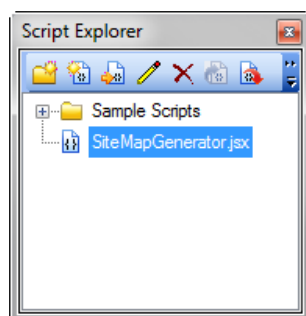
RoboHelp 10 supports automatic creation of sitemaps whenever you generate your output. This makes the sitemap generate a true set-and-forget solution. In automatic mode, the script will never give you a popup, it will just create a sitemap when needed. In the Output View pod, the script will notify you when a sitemap is created:



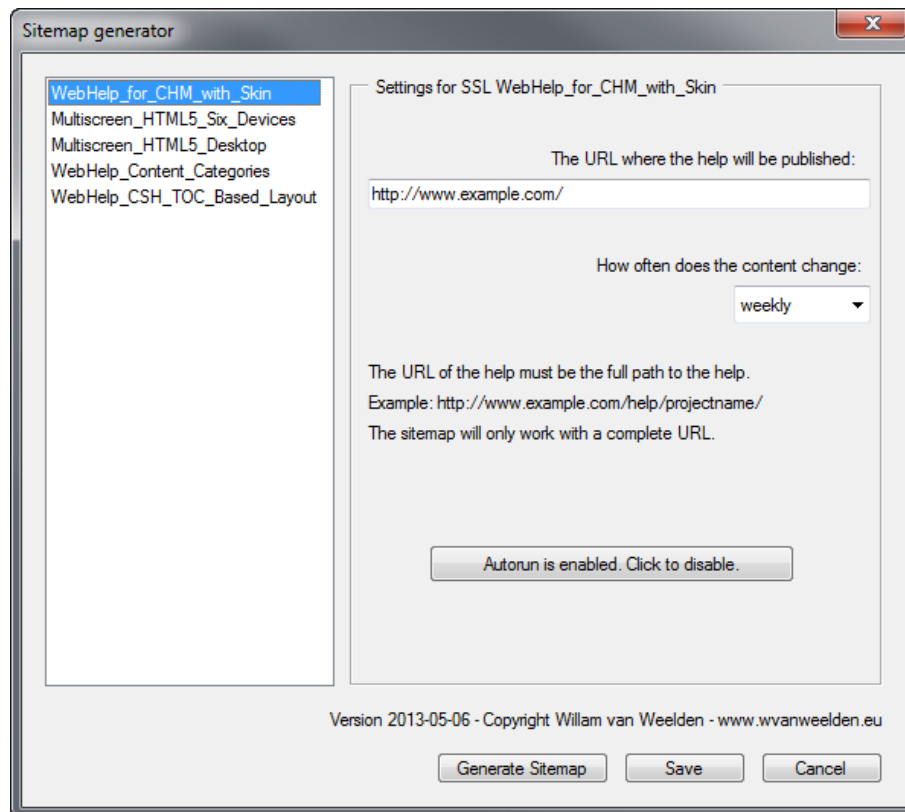
To use the sitemap generator as an automatic solution, you must set the URL for all Single Source Layouts and you must set the script to run automatically.

Set the URL for every Single Source Layout

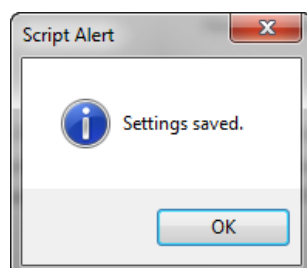
1. Open the RoboHelp project where you want to create a sitemap for.
2. Open the Script Explorer. You open the Script Explorer by clicking View > Pods > Script Explorer.



3. Select the Sitemap generator script and click **Run Selected Script File** (🔧 icon).



4. In the left pane, select the Single Source Layout you want to generate a sitemap for.
5. Add the URL of the help in field *URL*.
6. Choose how often this content changes.
7. Repeat step 4 to 6 for every layout you want to automatically create sitemaps for.
8. Click **Save**.

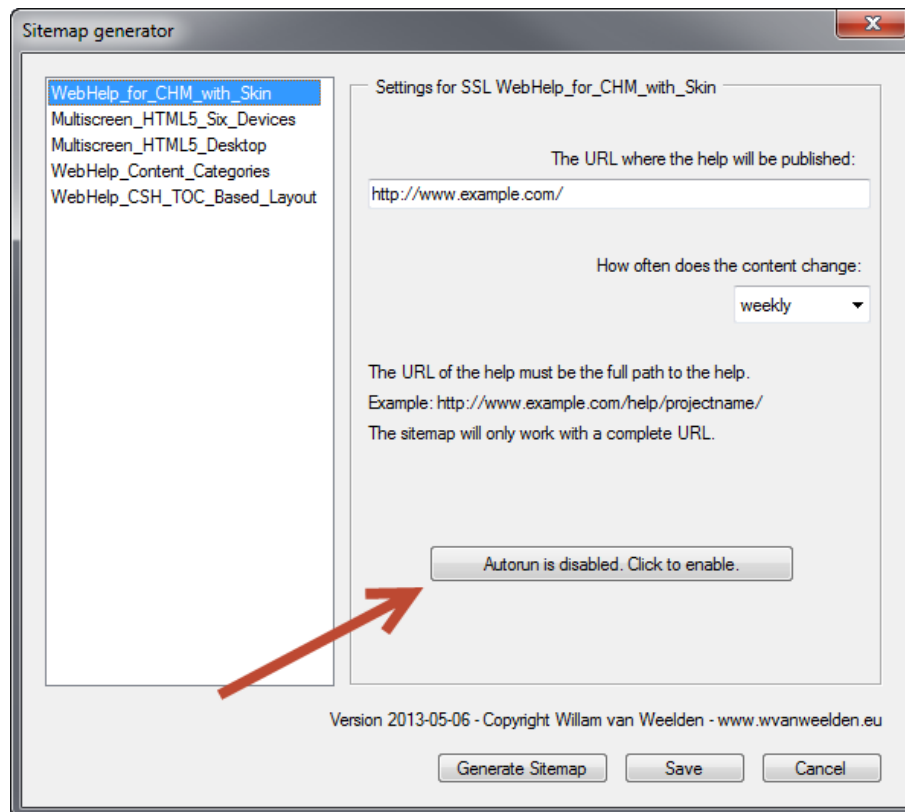


9. Click **OK**.

The settings are now saved for the Single Source Layouts in this project. If you want to automatically create sitemaps for other projects, repeat the steps for every project. If you are done, continue with the section “Set the script to run automatically”.

Set the script to run automatically

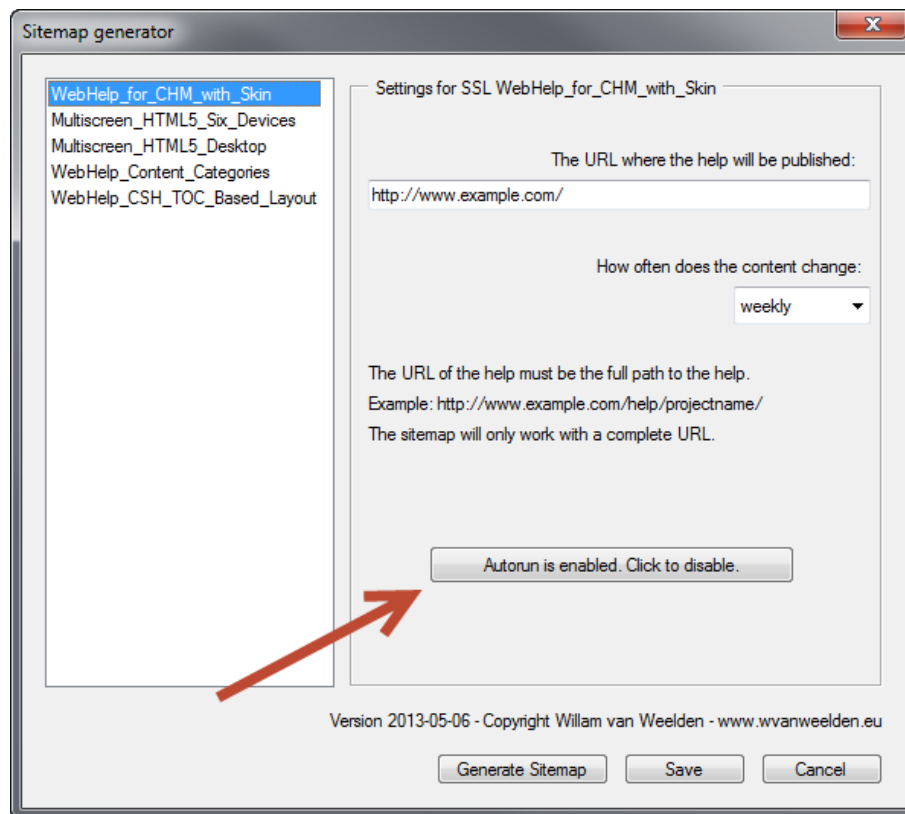
The sitemap generator interface contains the button **Autorun is disabled. Click to enable**. Click the button to make the script run automatically in the background.



If you do not see the **Autorun is disabled. Click to enable**, you are using RoboHelp 8 or 9. These versions of RoboHelp do not support the automatic mode of this script.

Stop the script from running automatically

If you have set the script to run automatically in the background, the sitemap generator interface will show the button **Autorun is enabled. Click to disable.** Click the button to stop the script running automatically.

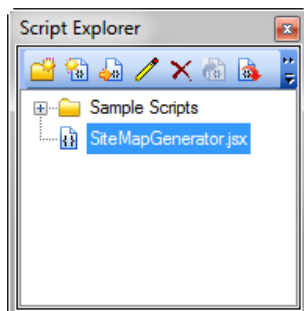


Create sitemaps for merged help

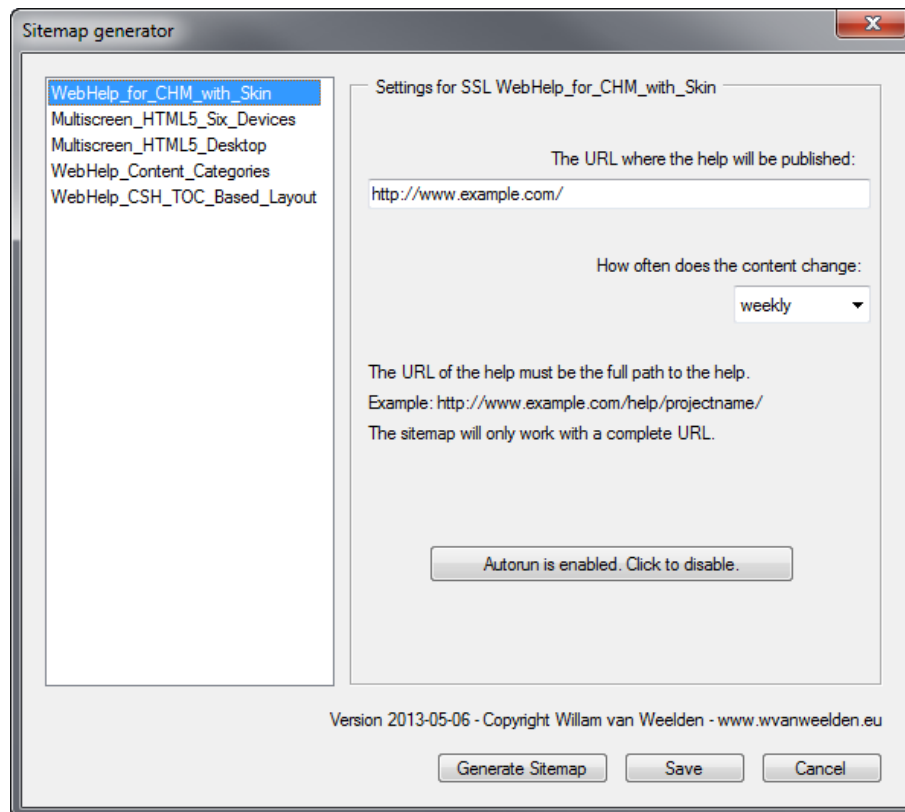
You can create sitemaps for merged help. For merged help, you need to manually create a sitemap after every help generation. This is a limitation of the way merged help works.

To create a sitemap for merged help, follow these steps:

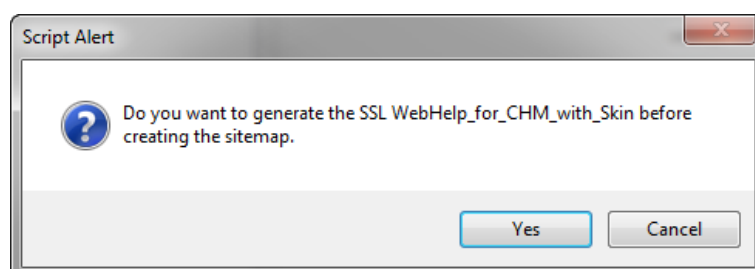
1. Generate your master project. Make sure that you leave the project in the directory RoboHelp generated the project.
2. Generate all your child projects. Paste the generated child projects in the folder mergedProjects of the master project.
3. Open the master project.
4. Open the Script Explorer. You open the Script Explorer by clicking *View > Pods > Script Explorer*.



5. Select the Sitemap generator script and click **Run Selected Script File** (🔧).

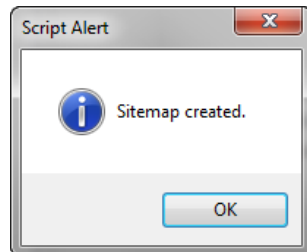


6. In the left pane, select the Single Source Layout of the master project.
7. Add the URL of the help in field *URL*.
8. Choose how often this content changes.
9. Click **Generate Sitemap**. (Your settings are automatically saved.)



10. Click **Cancel** or **No**. (Name may vary per installation.)

11. The sitemap is created when the script shows the following alert. Click **OK** to return to the sitemap generator.



Submitting your sitemap to a search engine

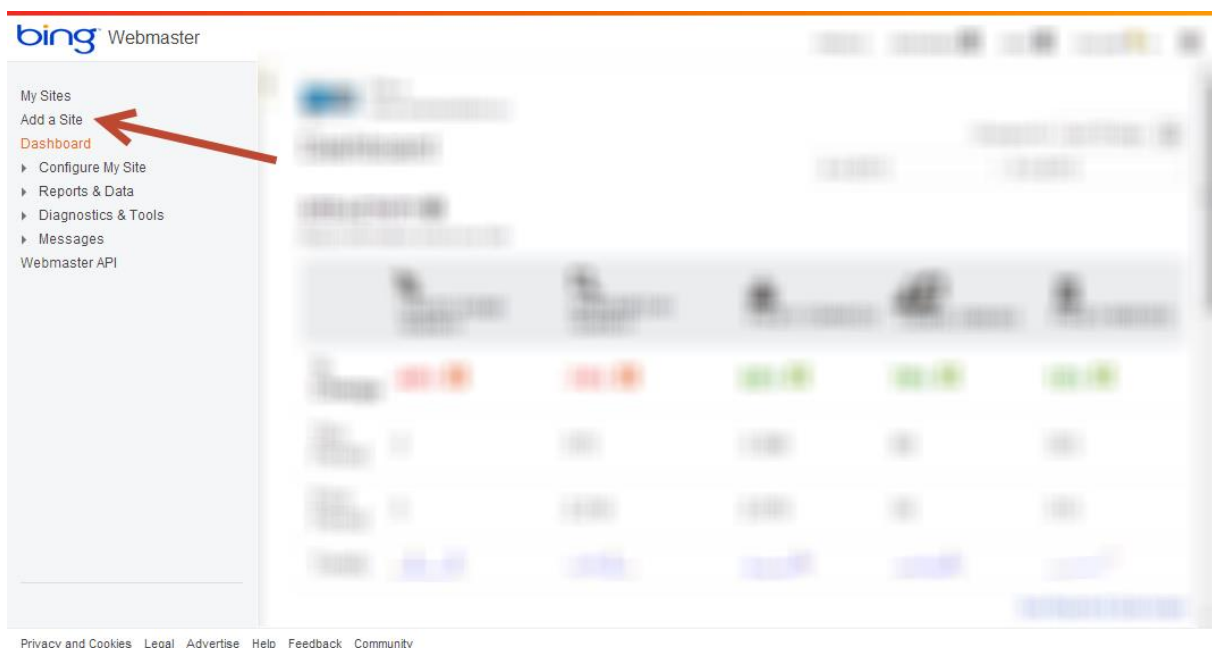
When you have created the sitemap, you are almost done. After you publish your help, the last step is to make your site known to search engines such as Bing and Google.

You only need to submit your sitemap once. Whenever you update your help and your sitemap, the search engine will automatically pick up any changes.


This chapter lists the steps required to submit your sitemap to Bing and Google. Normally, this is something your website administrator must do for you.



Bing

1. Go to the Bing webmaster toolbox page: www.bing.com/toolbox/webmaster
2. Log in using your Microsoft account.
3. In the sidebar, click **Add a Site**.




4. In the field *URL*, add the URL of the site that contains the help. Only point to the root of the site. For example: <http://www.example.com/help/>
5. In the field *Add a sitemap*, add the URL of the sitemap. This is the same as the *URL*, only add the text *sitemap.xml*. For example:
<http://www.example.com/help/sitemap.xml>


 Webmaster


PROFILE MESSAGES 3 HELP 2  


Add a Site

ABOUT MY WEBSITE

URL* 

Add a sitemap 

When do you receive the most traffic to this site for your local time of the day? 

All Day (Default) 

ADD

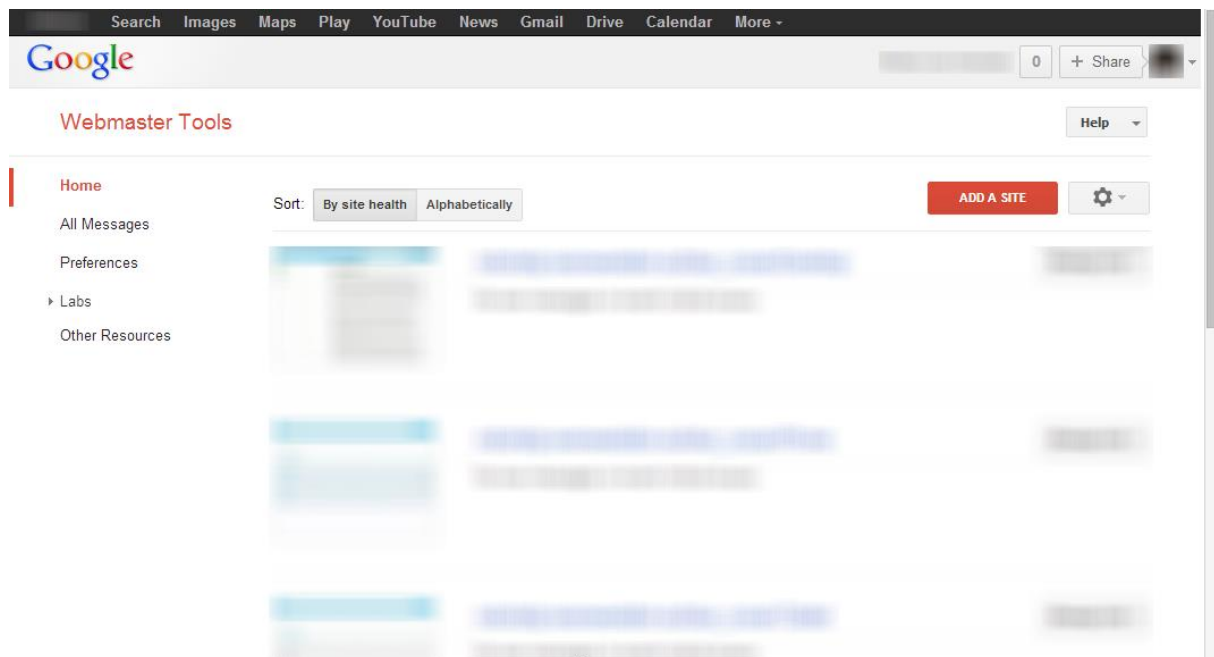
Privacy and Cookies Legal Advertise Help Feedback Community

6. Click **Add**.
7. Follow the steps indicated by Bing to verify that you are the owner of the site.

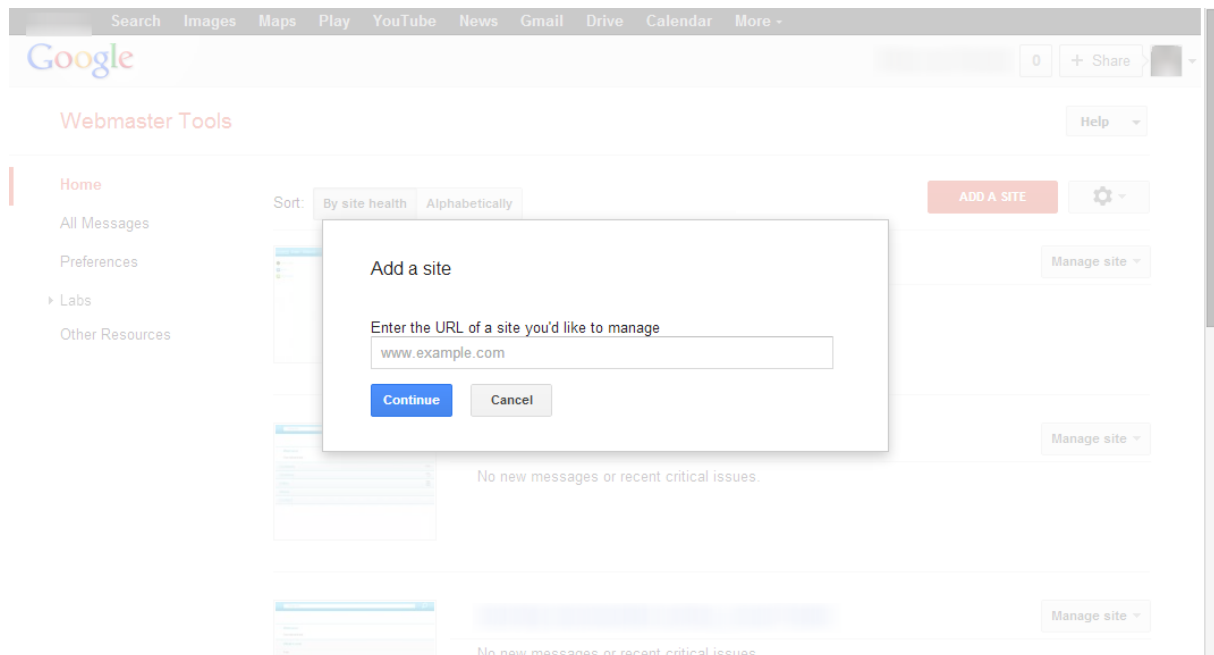
The sitemap is now submitted to Bing and the search engine will index your site.

Google

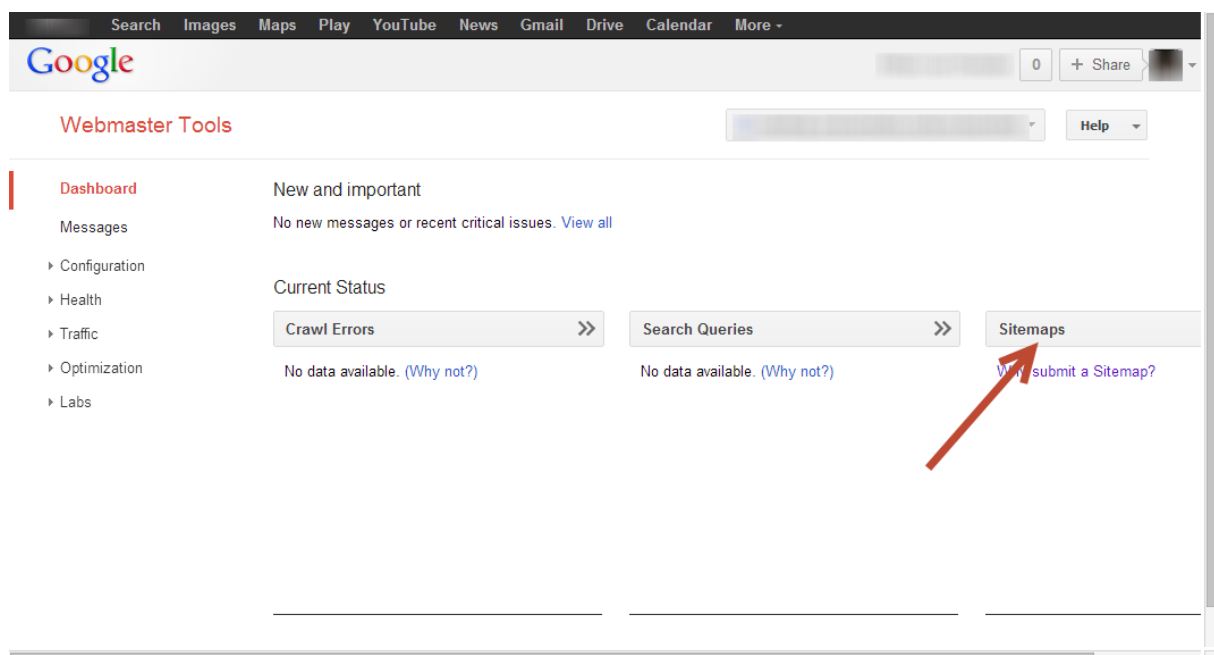
1. Go to the Google Webmaster Tools page:
<https://www.google.com/webmasters/tools/home>
2. Log on using your Google account.



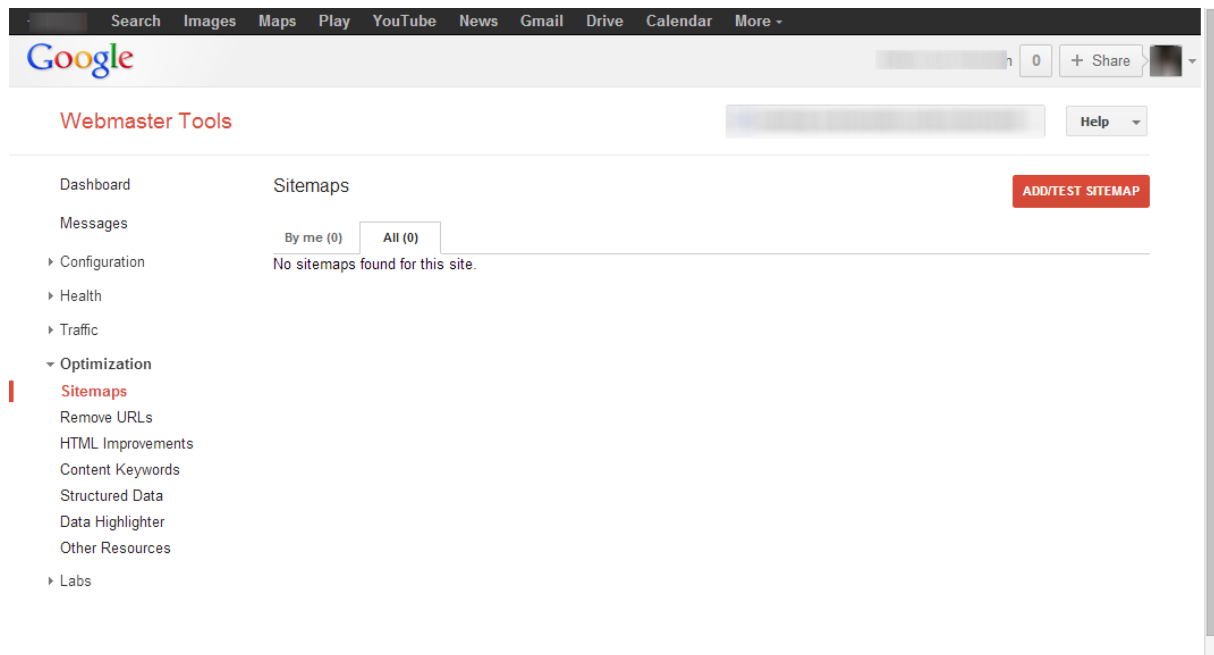
3. Click **Add a site**.



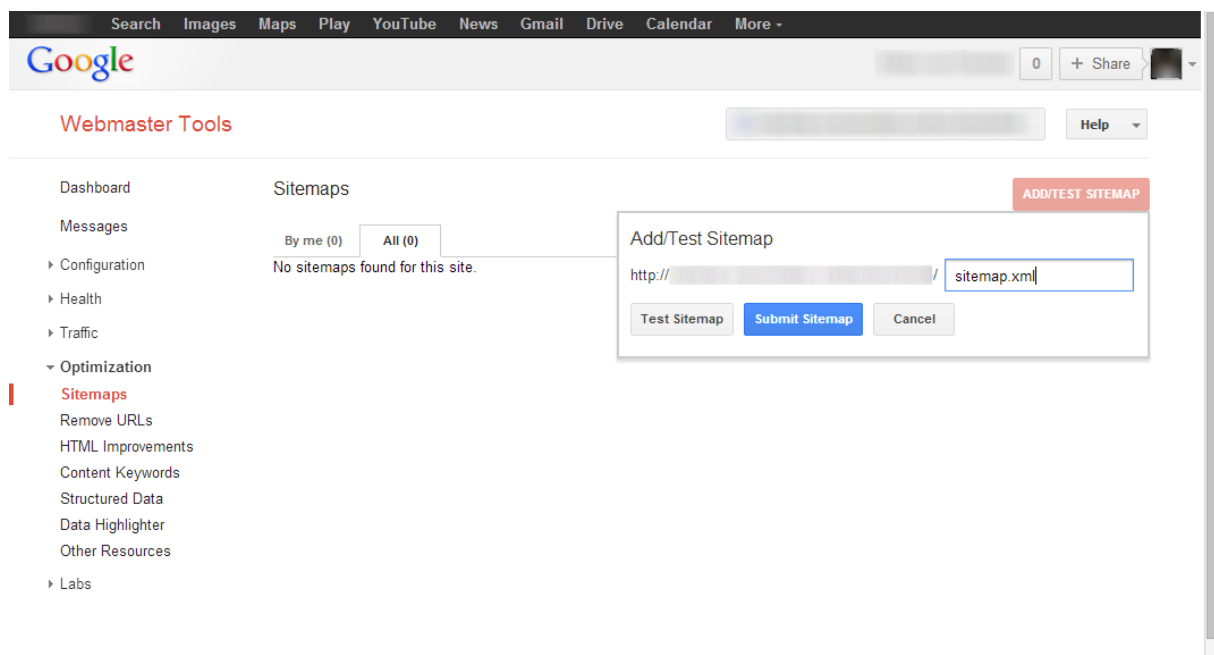
4. In the field *URL*, add the URL of the site that contains the help. Only point to the root of the site. For example: <http://www.example.com/help/>
5. Click **Continue**.
6. Follow the steps indicated by Google to verify that you are the owner of the site.



7. Go to the dashboard and on the right site, click the section **Sitemaps**.



8. Click **Add/Test Sitemap**.



9. Add the text *sitemap.xml* in the field.

10. Click **Submit Sitemap**.

11. Click the link **Refresh the page** to refresh the status of the page and see whether your sitemap was successfully submitted.

The sitemap is now submitted to Google and the search engine will index your site.